

M13 – Globular Cluster in Hercules

3 DIMENSIONAL VIEW, USING "EYES" 500 LIGHT YEARS APART, OF AN 18 X 27 ARCMIN AREA OF SKY

Taken with a Canon Digital Rebel SLR at prime focus of a Meade LX-90 8" SCT – 220 sec total exposure time, 4 exposures

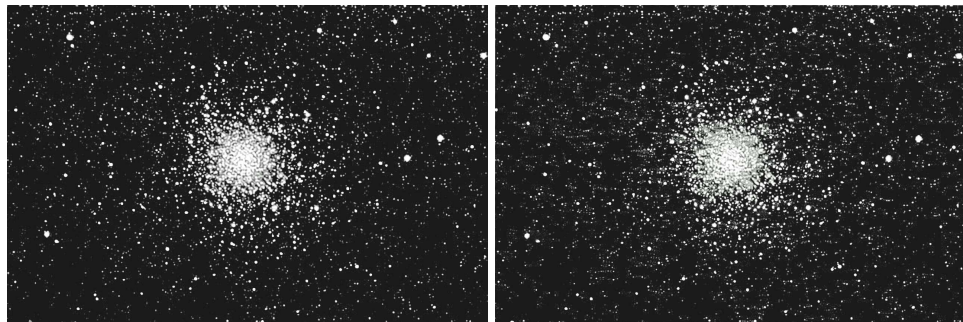
At the Pioneer Scout Reservation, Pioneer, Ohio – 09/19/2004 – by Larry Low

Processed using Adobe PhotoShop, PhotoShop Elements, AstroArt, Registax and others

Approximately 5000 stars are visible in the original of this image. This is only ONE PERCENT of the stars actually in the cluster, so multiply what you see by 100.

There are 150 such concentrated clusters, that COMBINED still make up only 1/50th of one percent of the billions of other stars in various types of groupings and star clouds in our Milky Way Galaxy.

VIEW WITH PARALLEL LINE OF SIGHT



VIEW WITH CROSSED LINE OF SIGHT

